

Update on Delaware Ocean Coast Combined Periodic Nourishment

Peter Gori
U.S. Army Corps of Engineers
Philadelphia District
4/5/2023



US Army Corps
of Engineers®





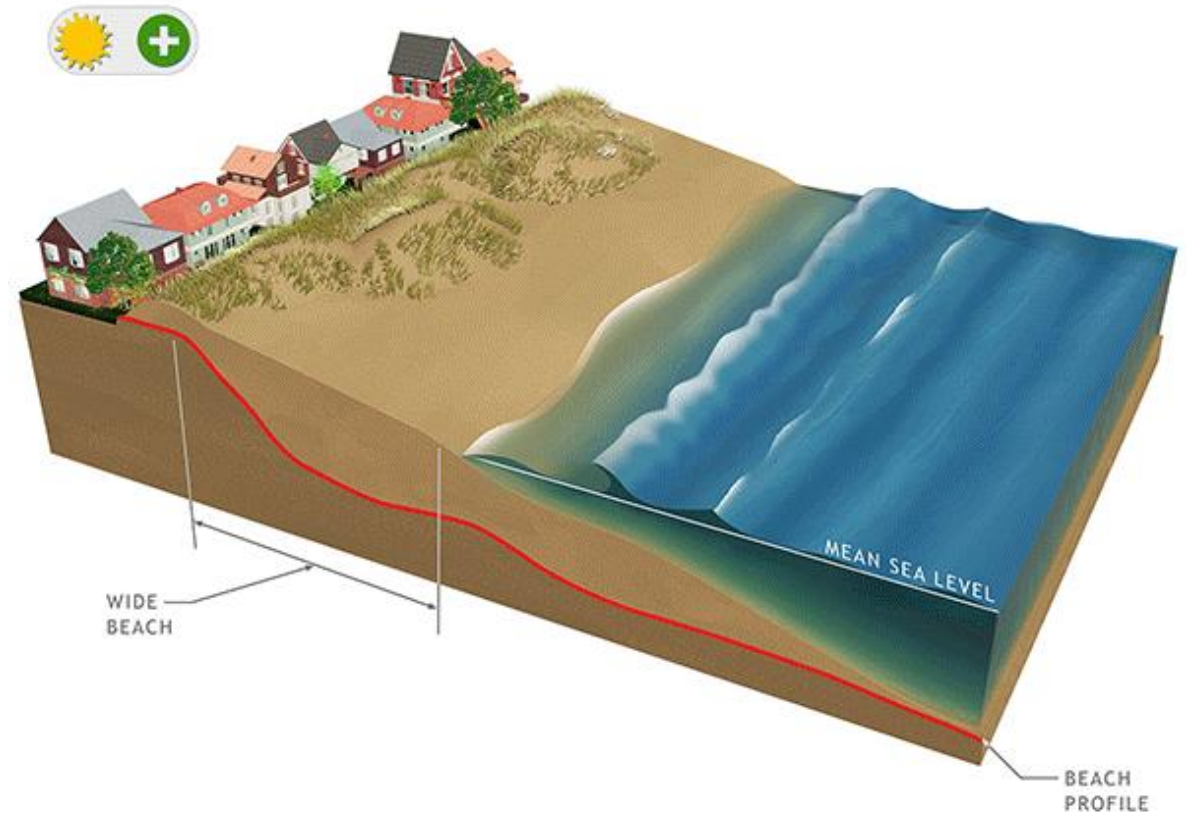
THE PURPOSE



Without engineered beach



With engineered beach + dune





DELAWARE OCEAN COAST COMBINED CONTRACT SPECIFICS



- Army Corps of Engineers awarded a \$23.8 million contract in November 2023 to **Weeks Marine Inc.** for periodic nourishment of 3 separate federal projects:
 - Rehoboth Beach & Dewey Beach
 - Bethany Beach & South Bethany Beach
 - Fenwick Island

- Dunes and associated beach access points will be repaired in certain areas; however, most of work includes widening beach between toe of dune and the water line.



DREDGING EQUIPMENT



RN Weeks (Hopper Dredge)

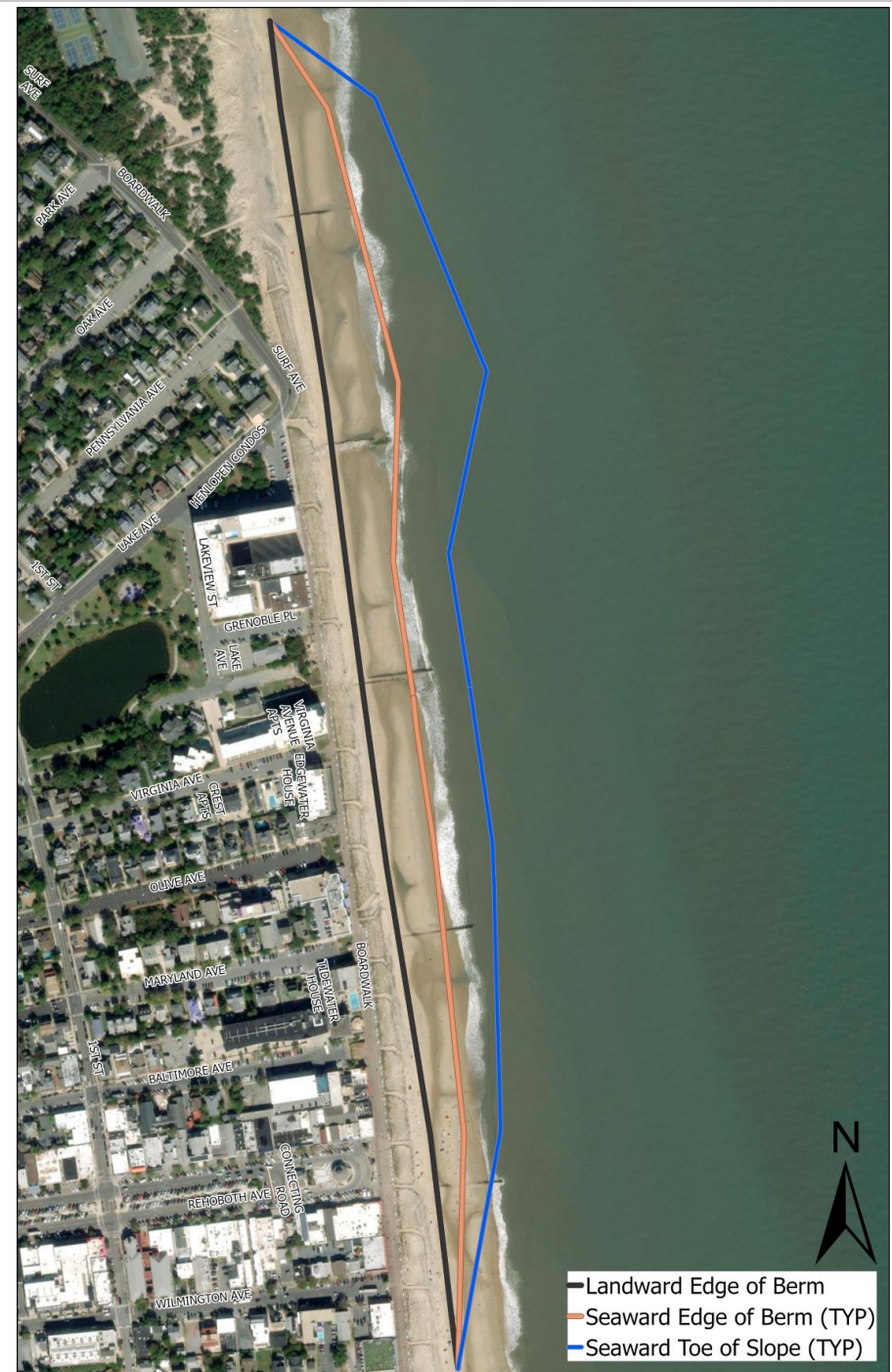


BE Lindholm (Hopper Dredge)



REHOBOTH BEACH PROJECT SPECIFICS

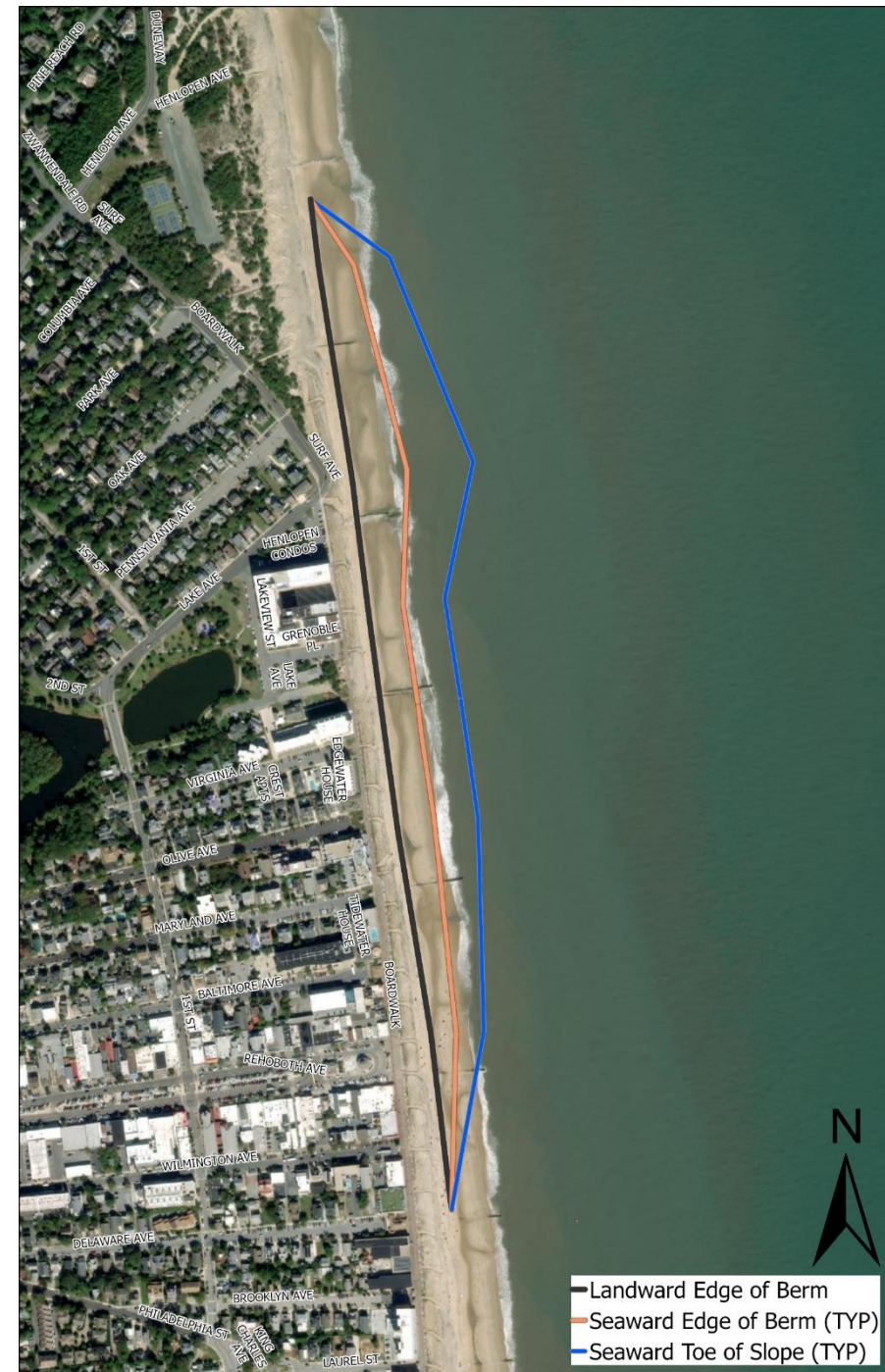
- Placement area:
 - Between City Tennis Courts area on N. Surf Avenue south to the Bandstand Area
- Estimated sand quantity:
 - Base Bid - 196,000 cy
 - Options – 100,000 cy
- Estimated number of days:
 - Base Bid – 14 days
 - Options – 3 to 8 days





DEWEY BEACH PROJECT SPECIFICS

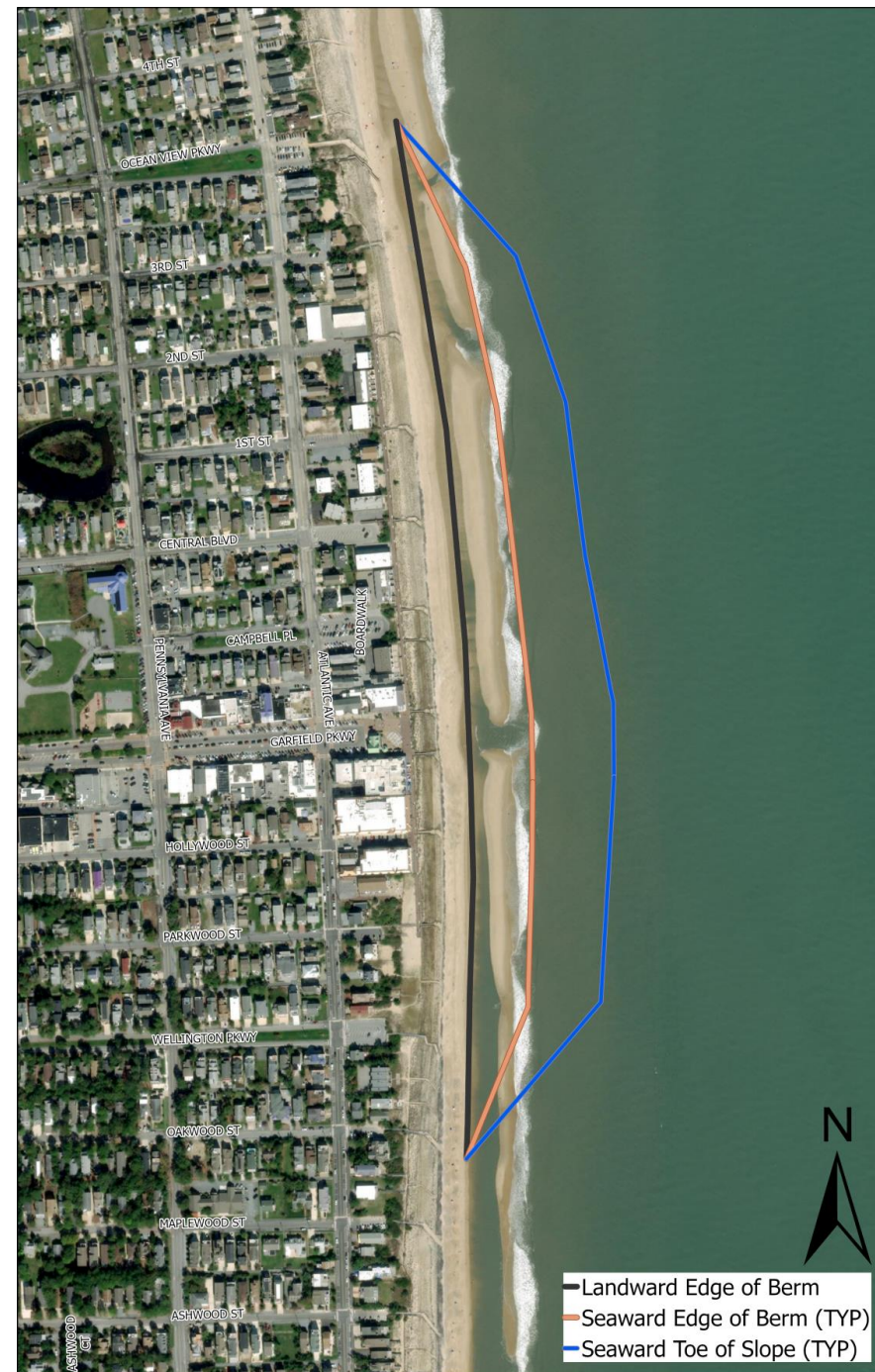
- Placement area:
 - Between Salisbury Street south to Beach Avenue area
- Estimated sand placement quantity:
 - Base Bid - 194,000 cy
 - Options – 100,000 cy
- Estimated number of days:
 - Base Bid – 12 days
 - Options – 3 to 8 days





BETHANY BEACH PROJECT SPECIFICS

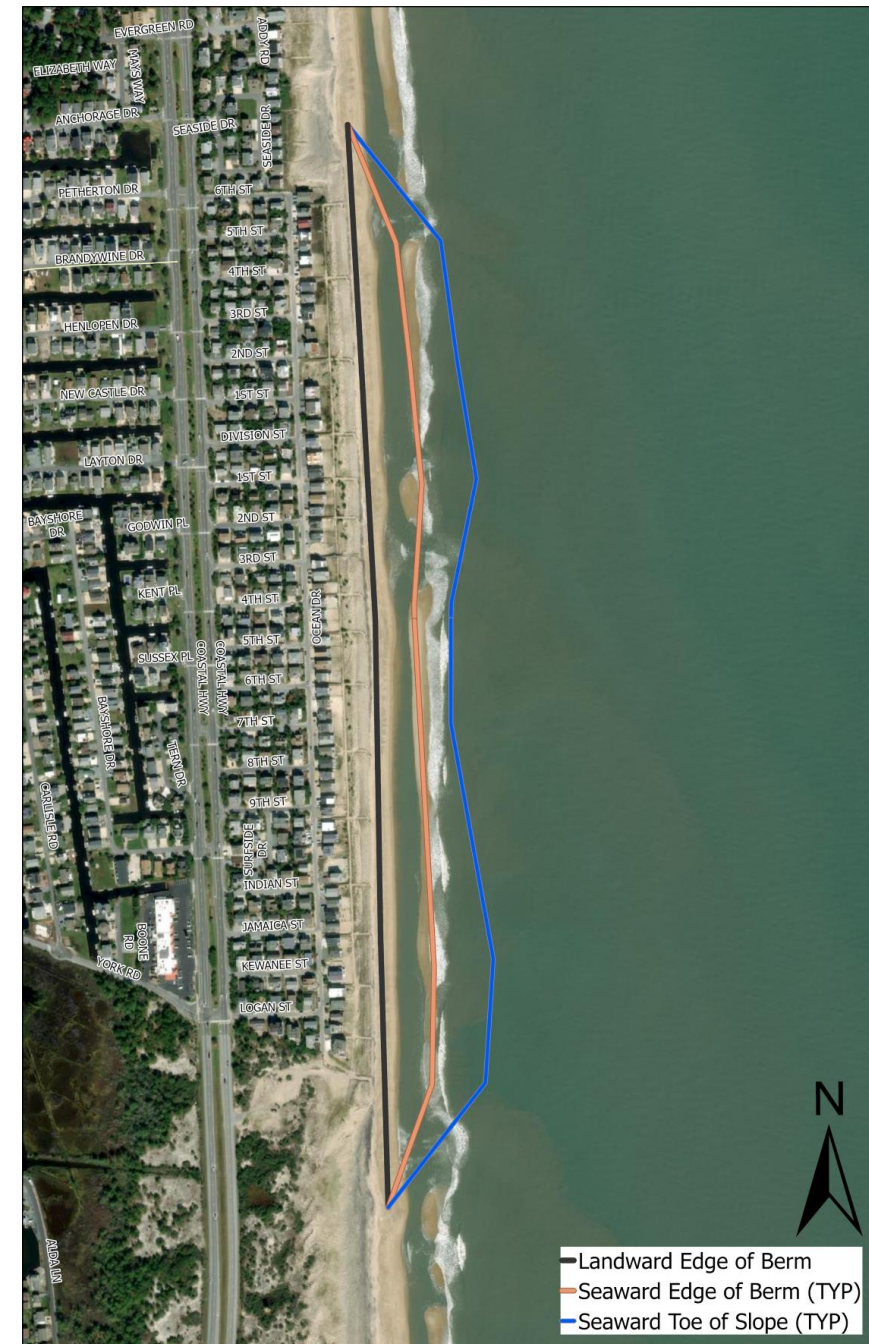
- Placement area:
 - Between Third Street south to Wellington Park
- Estimated sand placement quantity:
 - Base Bid - 245,000 cy
 - Options – 125,000 cy
- Estimated number of days:
 - Base Bid – 18 days
 - Options – 4 to 10 days





SOUTH BETHANY BEACH PROJECT SPECIFICS

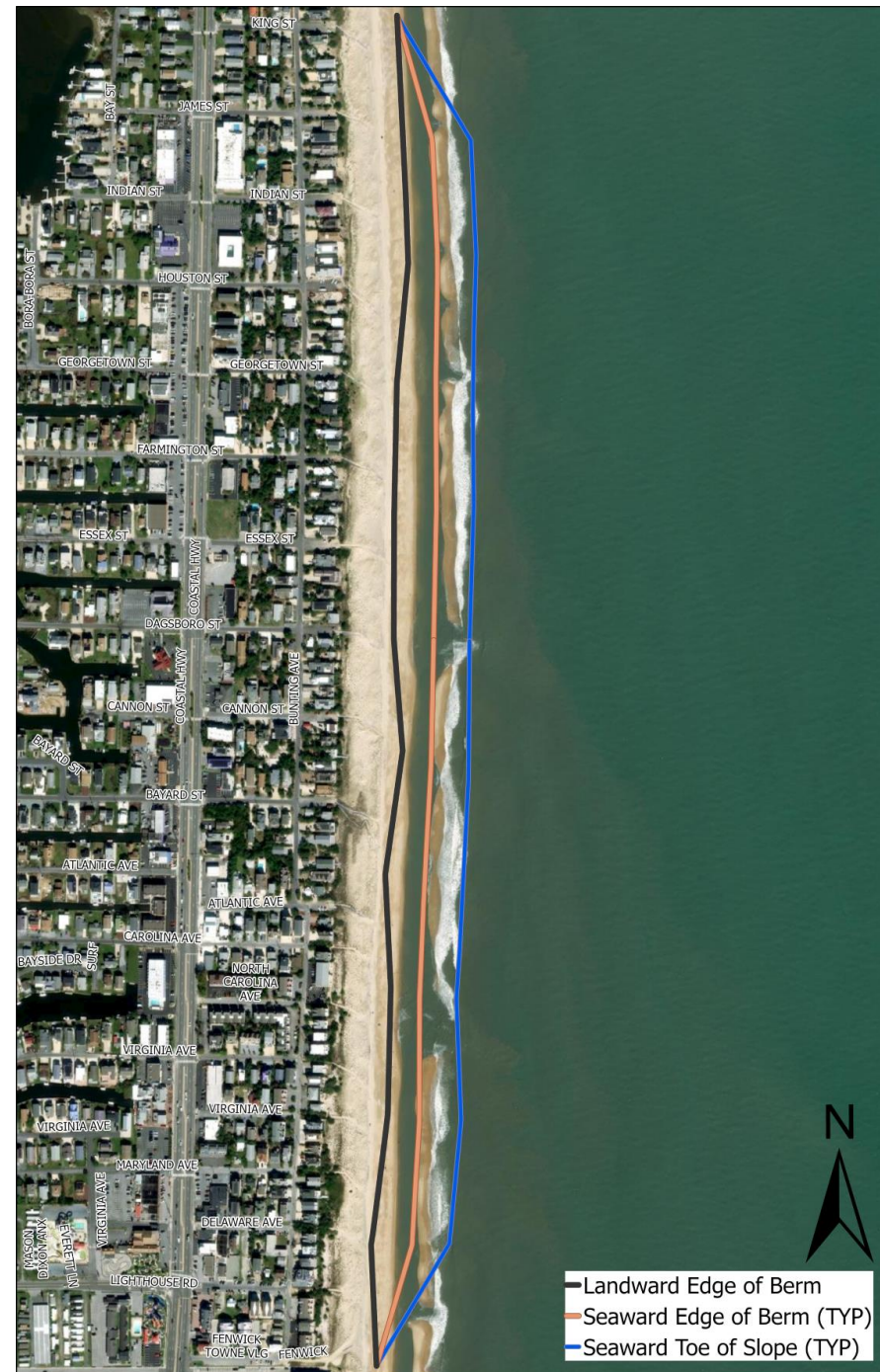
- Placement area:
 - Between North 5th Street south to N. end of Fenwick Island State Park
- Estimated sand placement quantity:
 - Base Bid - 287,000 cy
 - Options – 150,000 cy
- Estimated number of days:
 - Base Bid – 17 days
 - Options – 4 to 10 days





FENWICK ISLAND PROJECT SPECIFICS

- Placement area:
 - Between Kames Street south to Lighthouse Road
- Estimated sand placement quantity:
 - Base Bid - 207,000 cy
 - Options – 100,000 cy
- Estimated number of days:
 - Base Bid – 14 days
 - Options – 3 to 8 days



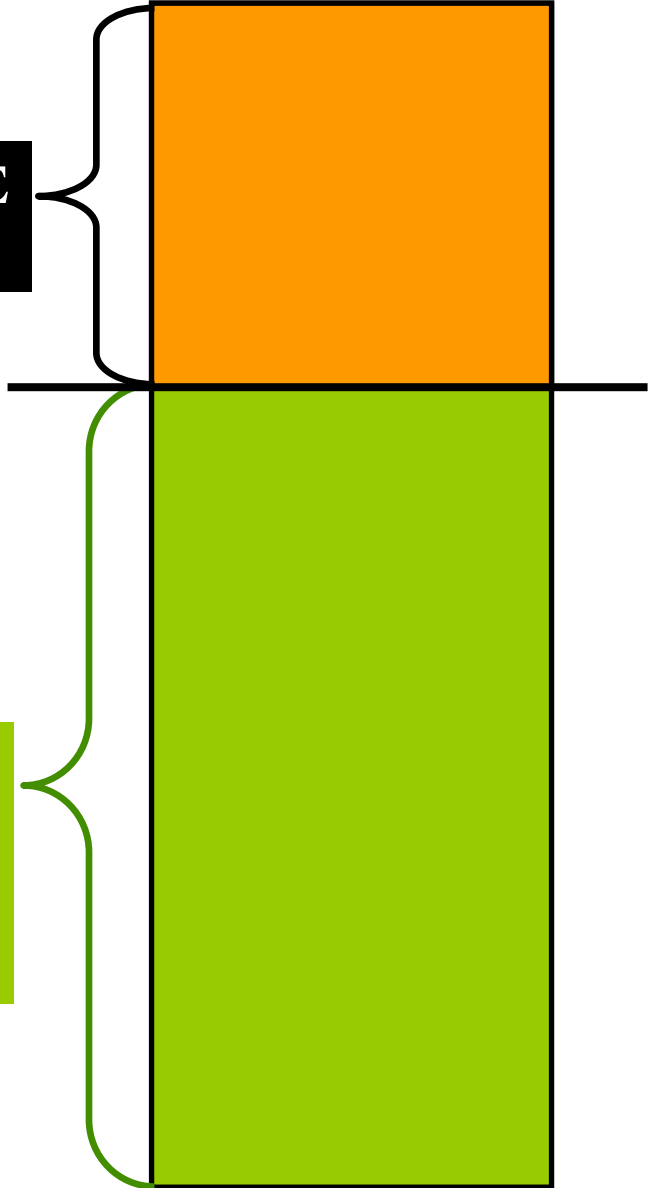


COST BREAKDOWN



NON-FEDERAL SHARE
35% (State/DNREC)

FEDERAL SHARE
65% (Congressional
Energy & Water
Appropriations)



**US Army Corps
of Engineers®**



UPDATES DURING CONSTRUCTION



- Weekly Construction Progress Meetings (each community welcome to send representative)
- Daily Website Updates (noting closed areas, construction status, and progress)
- NOTE: during construction, contractor limited to closing no more than 1000 feet of beach

An official website of the United States government [Here's how you know.](#)

About Business With Us Missions Locations Careers Media Library Contact

US Army Corps of Engineers Philadelphia District & Marine Design Center Website

2023 Beachfill Construction Details

| | |
|-------------------------------------|--|
| REHOBOTH BEACH & DEWEY BEACH | <ul style="list-style-type: none">▪ Summary & Placement Areas: In Rehoboth Beach, sand will be placed on the beach in the northern portion of the community (between City Tennis Courts area on N. Surf Avenue south to the Bandstand Area). In Dewey Beach, sand will be placed on the beach between Salisbury Street south to the Beach Avenue area. Estimated sand quantity: Rehoboth Beach – 196,000 cubic yards; Dewey Beach – 194,000 cubic yards.▪ Estimated Start Date: USACE's contractor Weeks Marine anticipates mobilizing to Rehoboth Beach in March with dredging/placement operations expected to begin in Rehoboth Beach in early to mid April. When work is finished in Rehoboth Beach, work will proceed to Dewey Beach.▪ Rehoboth Beach Pipe Landing Location & Sequence: a pipe landing will be made between Olive and Virginia Avenue. Work will first proceed north and then from the pipe landing, the contractor will flip and work will proceed south.▪ Dewey Beach Pipe Landing Location & Sequence: a pipe landing will be made between Read & Rodney Streets. Work will first proceed north and then from the pipe landing, the contractor will flip and work will proceed south. |
| BETHANY BEACH & SOUTH BETHANY BEACH | |
| FENWICK ISLAND | |

[HTTPS://WWW.NAP.USACE.ARMY.MIL/DELAWARE](https://www.nap.usace.army.mil/delaware)



QUESTIONS?

Contact Info:
Steve Rochette

Stephen.Rochette@usace.army.mil

(contact for any public queries regarding the project)